

Sewer Sta. 30+50

6" Lateral - Sta. 31+13

M.H. No. 10 Sewer Sta. 32+17  
opp Surv. Sta. 32+39.96

M.H. No. 11 Sewer Sta. 32+51 (from ahead)  
Sta. Equation -  
Sta 32+51 from ahead = 32+60 from rear

B.M. # 7  
Cross on North Side of  
Concrete Top of Catch  
Basin at Sta. 35+84  
Elev. 663.75

690 E. Riverside

See Sheet  
Match Line

End of Guard Rail

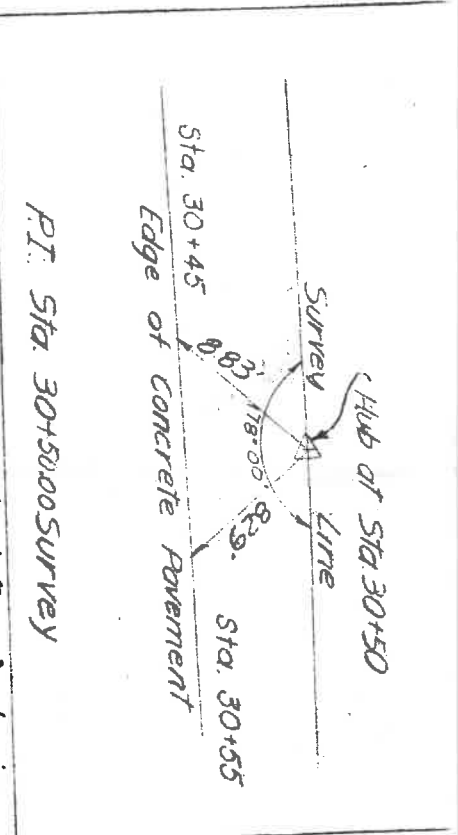
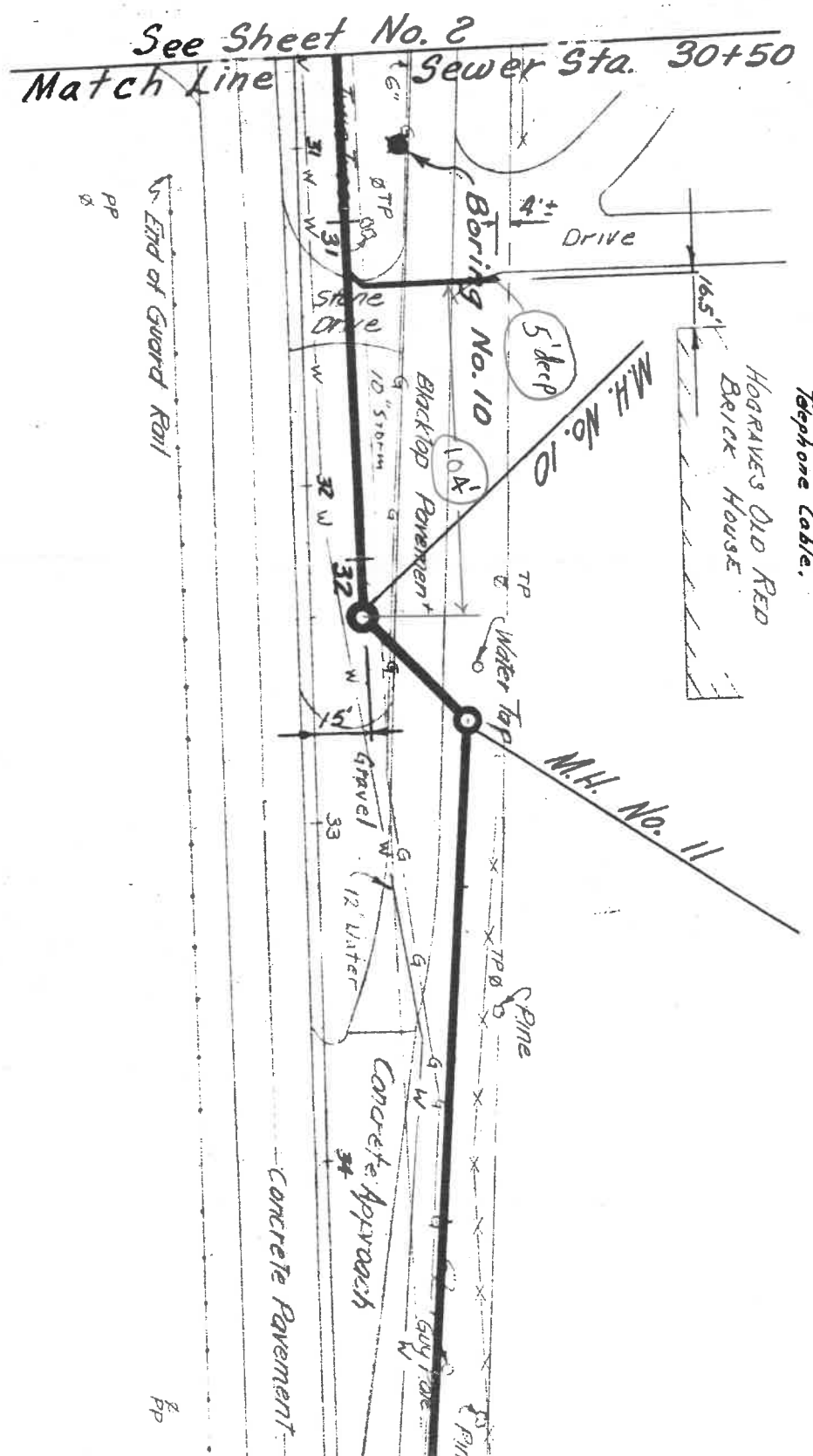
Concrete Pavement

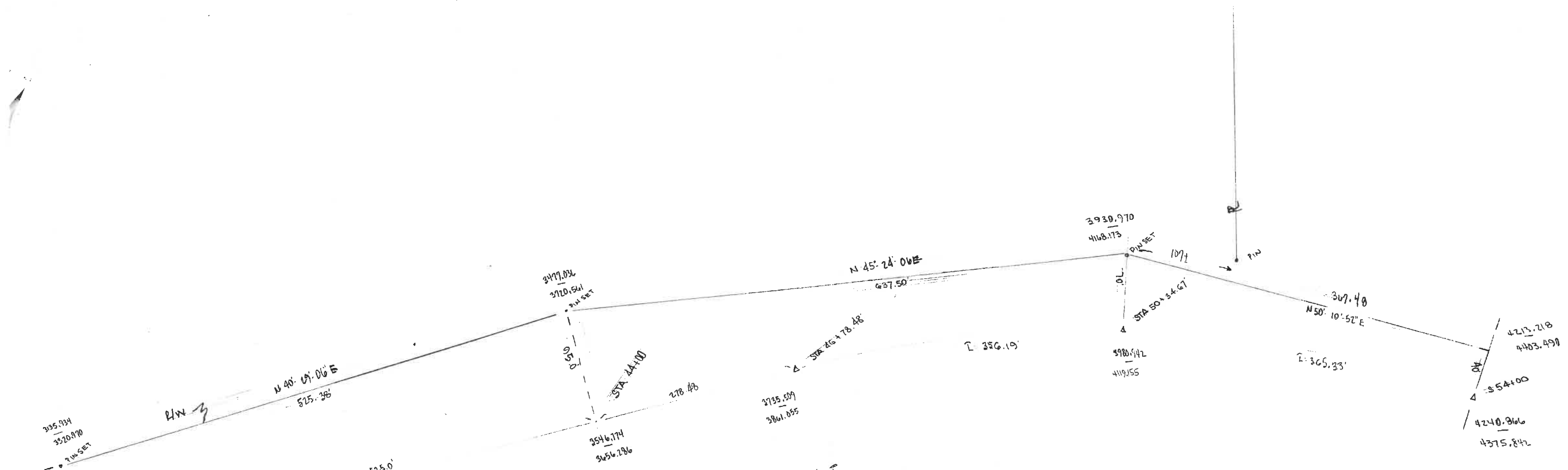


M.H. No. 10 Sewer Sta. 32+17  
 opp. Surv. Sta. 32+39.96

M.H. No. 11 Sewer Sta. 32+51 (from ahead)  
 Sta. Equation -  
 Sta 32+51 from ahead = 32+60 from rear

B.M. # 7  
 Cross on North Side of  
 Concrete Top of Catch  
 Basin at Sta. 35+84  
 Elev. 663.75





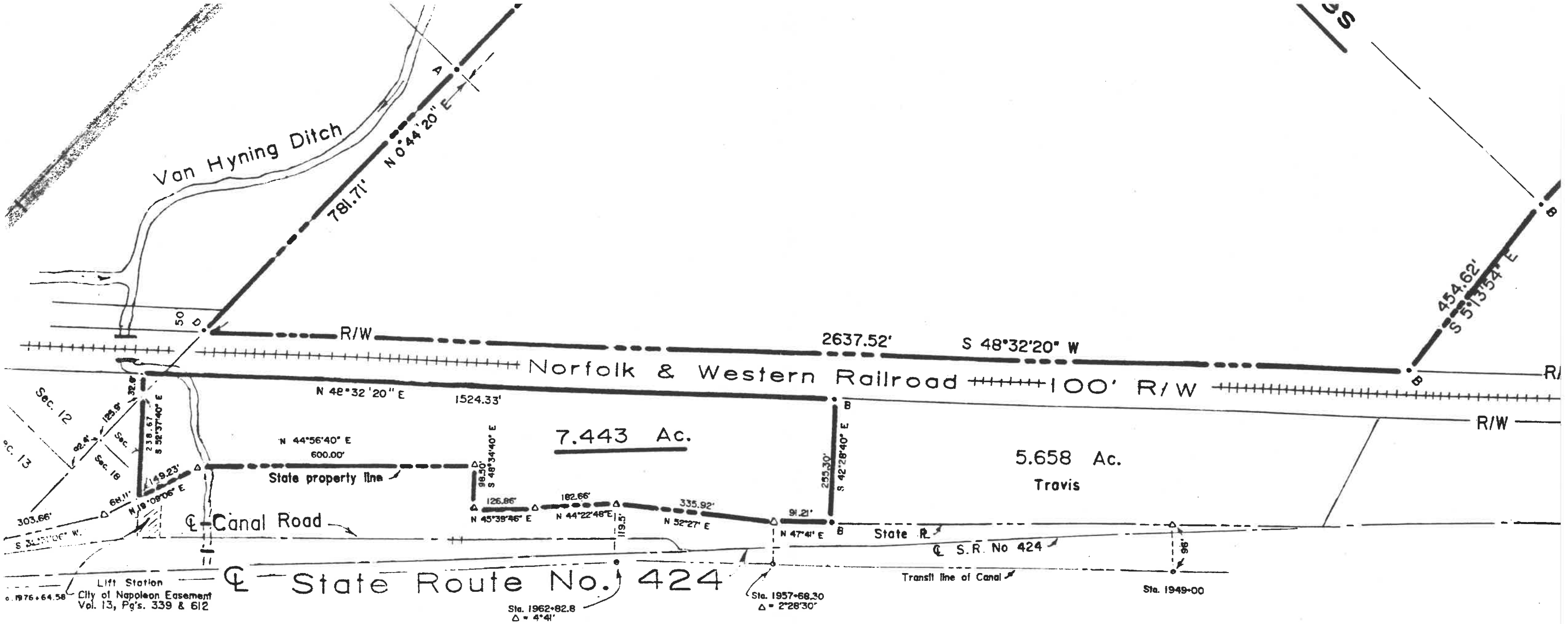
A: 7' 0" RT  
 D: 0' 30"  
 T: 700.88'  
 E: 21.42'  
 R: 11,459.16'  
 PI: STA 53+79.36'  
 PC: 46+78.48'  
 PT: 60+78.48'

4534-HC-1-22-91  
 City of Napoleon  
 (Hogefc)

12,161,533  
 2,9105,184

305.934  
 3520.970  
 21 W SET  
 115.0'  
 388.75  
 800.51'  
 N 42° 40' E  
 525.0'  
 3200.445  
 3243.031  
 2768.760  
 2752.940

4213.218  
 4403.499  
 354+00  
 4240.866  
 4375.842



**Legend**

- A- Steel axle found
- B- Iron pin found
- C- P.K. nail found
- D- Point found or reestablished

Previous Survey References  
 Vol. 5, Pg. 129-A  
 Vol. 6, Pg. 51

I hereby certify  
 to be correct